

## Wing Nut

**Thread Type:** Metric - Coarse

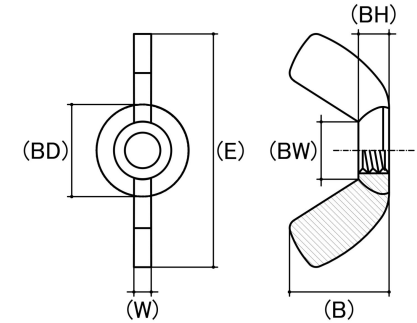
**Thread Direction:** Right Hand

**Material:** Stainless Steel

**Class Grade:** A2-70 G304

**Corrosion Protection Level:** Excellent

**Standard:** ANSI B18.7



*CAD drawings shown for graphic representation only.\**

Size	Thread Pitch (mm)	Thread Type	Overall Nut Height (B) (mm)		Boss Diameter (BD) (mm)		Wing Span Range (E) (mm)		Wing Thickness (W) (mm)		Boss Height (BH) (mm)		Between Wings (BW) (mm)		sku (qfind)
			Min	Max	Min	Max	Min	Max	Min	Max	Min	Max	Min	Max	
M3	0.50	Coarse	8.00	9.10	7.00	8.00	17.25	19.50	2.10	2.80	2.85	3.30	5.10	6.25	41WS3
M4	0.70	Coarse	9.60	11.00	9.60	9.90	21.00	22.00	2.90	3.56	3.56	3.90	7.10	7.75	41WS4
M5	0.80	Coarse	9.60	11.00	9.90	10.90	19.00	24.00	2.50	3.56	3.56	4.57	5.61	6.85	41WS5
M6	1.00	Coarse	11.00	13.50	11.50	12.70	24.00	28.00	3.56	4.57	4.32	5.60	6.62	8.40	41WS6
M8	1.25	Coarse	13.60	15.50	12.90	14.75	26.00	32.00	4.30	5.38	5.10	6.35	12.90	14.75	41WS8
M10	1.50	Coarse	16.50	18.50	16.27	17.85	33.00	37.00	5.10	6.10	6.60	7.67	10.70	12.20	41WS10
M12	1.75	Coarse	21.00	25.40	21.80	23.65	45.00	50.00	6.60	8.40	8.90	9.90	13.65	16.55	41WS12
M16	2.00	Coarse	31.00	35.00	28.70	30.22	64.00	71.00	8.65	10.20	12.90	14.00	20.48	23.00	41WS16
M20	2.50	Coarse	31.00	35.00	32.30	34.00	64.00	71.00	8.65	10.20	11.00	13.20	20.48	23.00	41WS20

**Disclaimer:**

Dimensional data and technical information was obtained from publically available sources and not acquired through standard agencies. It has been completed and compiled for reference purposes only; where discrepancies are found they are subject to change without notice. Bolt & Nut Australia makes no warranties or representations regarding the accuracy and validity of the compiled information and data. Contact the relevant standard authorities for accurate and detailed information.

\* CAD drawings may not reflect diameter, thread length or overall length.

© Bolt & Nut Australia Pty Ltd. All rights reserved.

Version: 18 Mar 2024